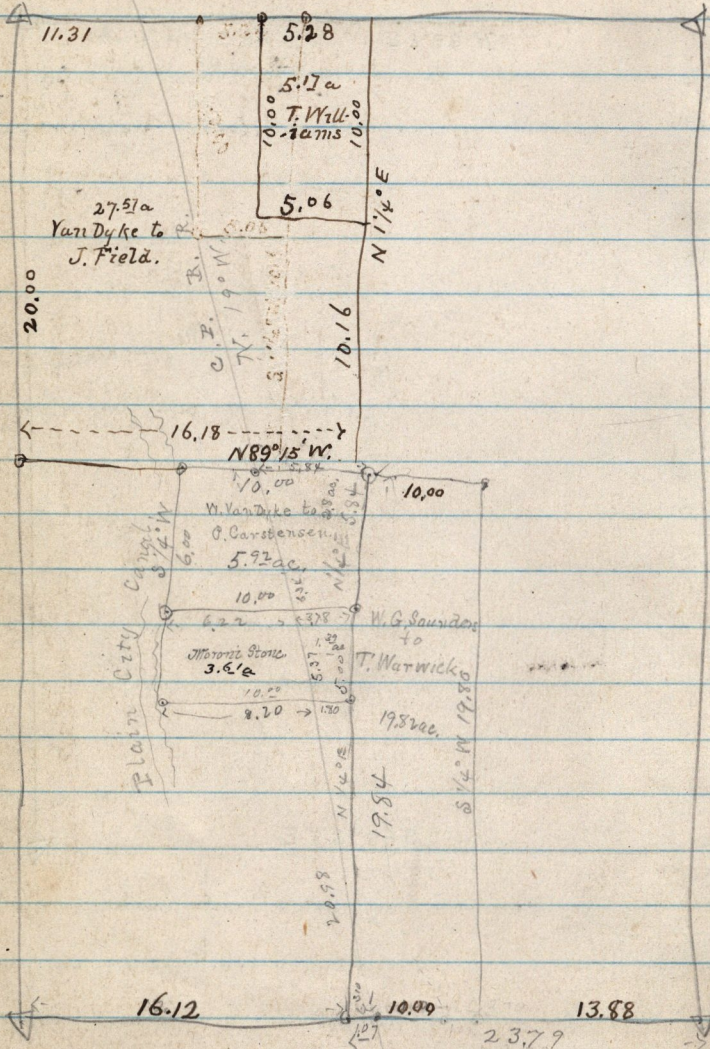


July 23-1886

T6

South West 1/4 Sec 7, N.R. 1.W.

W<sup>m</sup> Van Dyke Patentee.



Deed W<sup>m</sup> Van Dyke to Morris Stone, part-SW 1/4 Sec 7 T 6 N R 1 W, Cont. 23.88 a  
 of land, N 1/4 E, 9.00 ch. from the S.E. corner of said 1/4 Sec, thence N 74° E, 5.00 ch., W 10.00 ch.  
 S 1/4 W, 5.00 ch., E 10.00 ch., to place of log, containing 5.00 acres, reserving to Plain City Water Co  
 a right of way through said land.